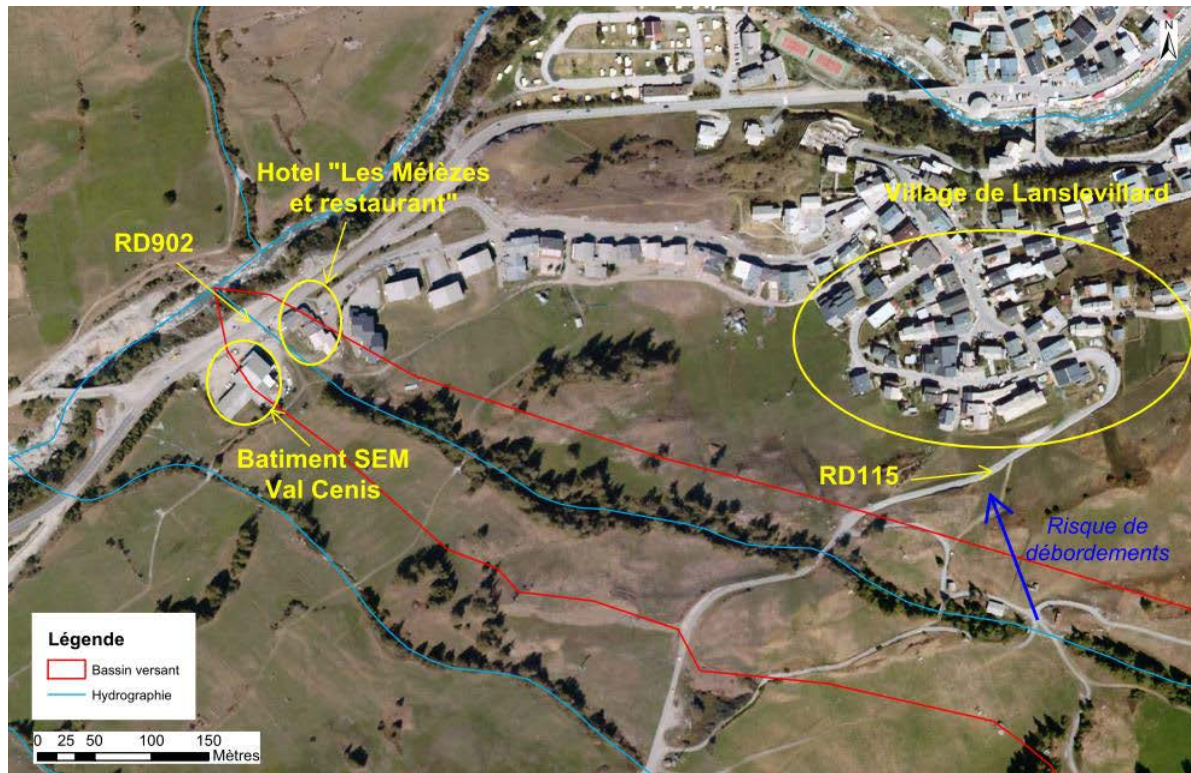


Table ronde

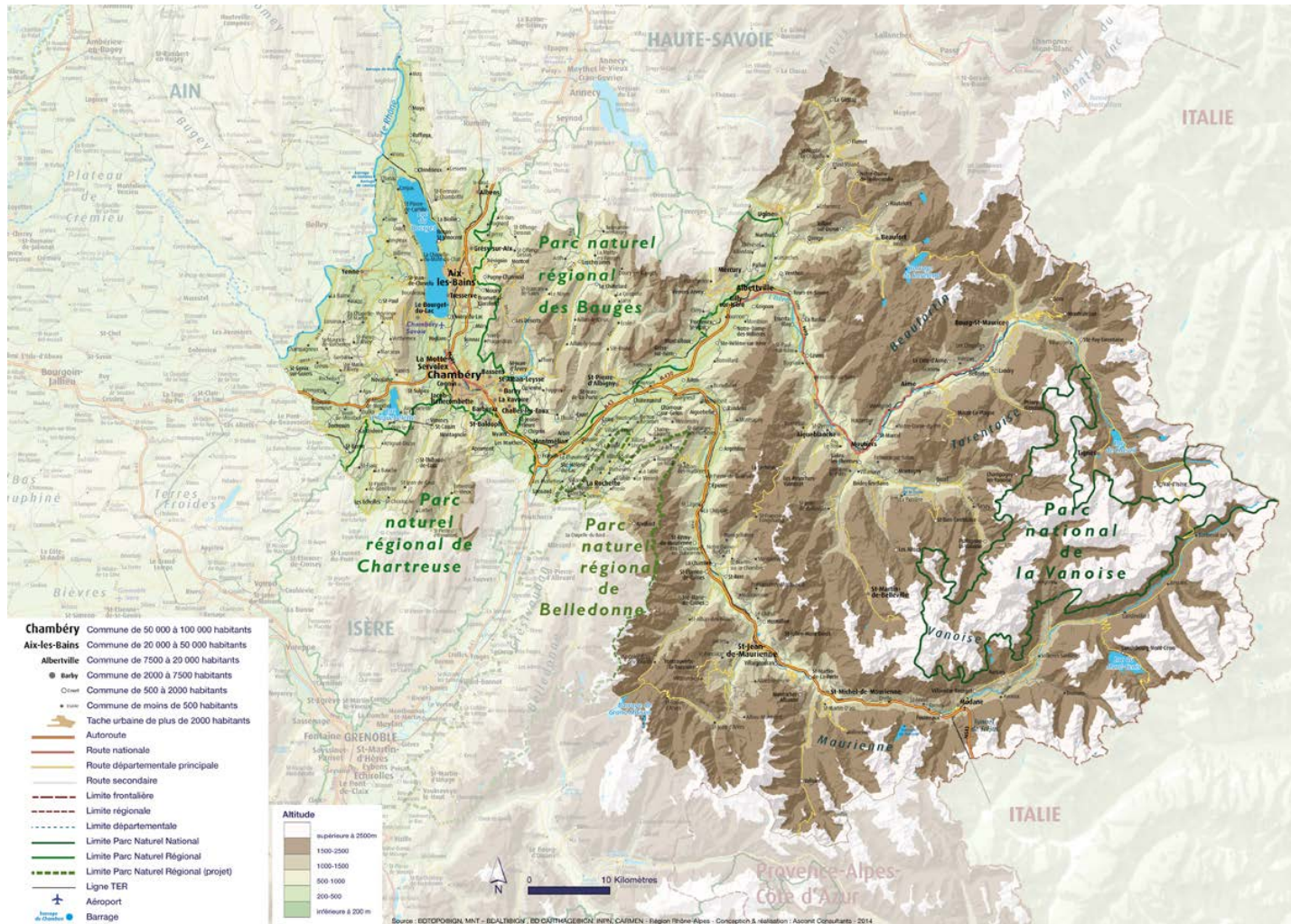
Regional planning and apparition of new risks (permafrost hazards)

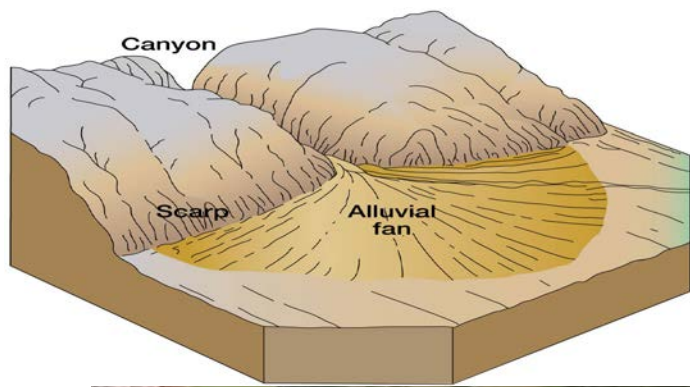


Philippe Quémart
Chef du service sécurité et risques
Direction Départementale des Territoires de la Savoie
philippe.quemart@savoie.gouv.fr

Physical characteristics of Savoie

- 90% of its territory located in mountainous area
- Average altitude : 1 500 m
- Several tops of more than 3 000 meters (36 beyond 3 500 m), summit with 3 855 meters for C





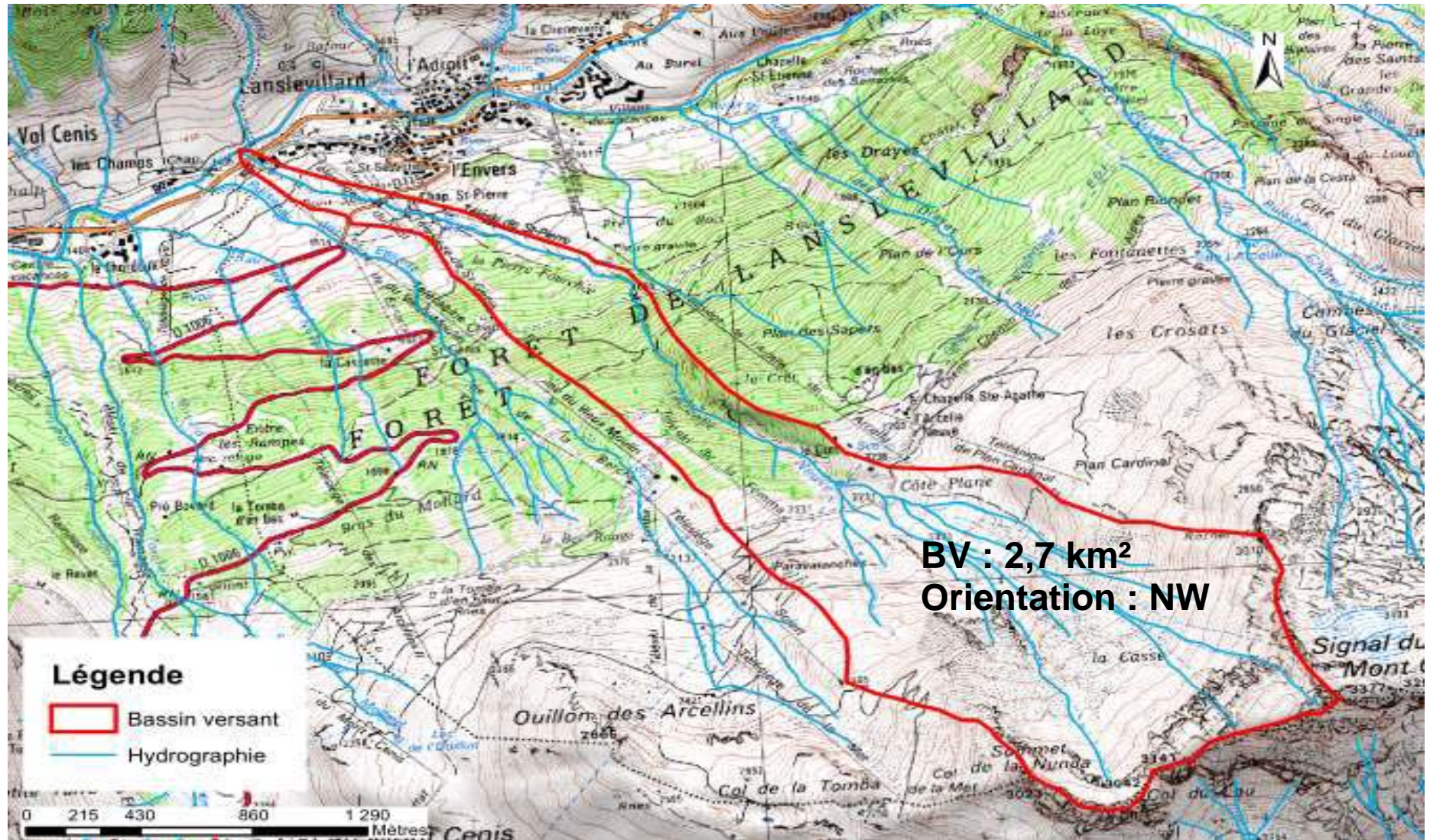
Actions of the State regarding risk prevention natures in zone of mountain



An example of torrential lava associated with landslide within permafrost Val Cenis (Maurienne/France) : Storm of 14 august 2015 on Arcelle Neuve

The site is on the alluvial cone of Arcelle, torrent of mountain which occurs towards the collar of Lou at 2800 m of

This last is in connectivity with the trough of the system of Arcelle New, known for its torrential risings (24/08/1987).



General morphology



Face of the glacier rock

Zone of landslide 17/08/2014 (RTM73)

Mechanisms at the origin of the landslides of August 14th, 2015

The two landslides are in a zone of strong slope ($> 35^\circ$) overcome by important projecting ledge.

The starting zone seems to be on the face of the rock glacier.

